

IP - INTERFACE POINT WITH EXISTING PLANT
 TP - TERMINAL POINT EXTERNAL TO FGD RETROFIT PROJECT

NOT TO BE USED FOR CONSTRUCTION
 THE DISTRIBUTION AND USE OF THE NATIVE FORMAT CAD FILE OF THIS DRAWING IS UNCONTROLLED. THE USER SHALL VERIFY TRACEABILITY OF THIS DRAWING TO THE LATEST CONTROLLED VERSION.

ISSUED FOR EIA		SCE	SMA	REV	DATE
0	08/27/14				
MEDUPI POWER STATION MEDUPI FGD RETROFIT PROJECT WASTEWATER AND ZLD SYSTEM FLOW DIAGRAM (EIA)					
178771-SK-M0011				REV	DATE
				0	
DSZ				REV	DATE

18.2a (LMS Tech)
 09/05/14 08:30:28
 1-11

1 2 3 4 5 6 7 8 9 10 11 12 13 14 15 16 17 18 19 20 21 22

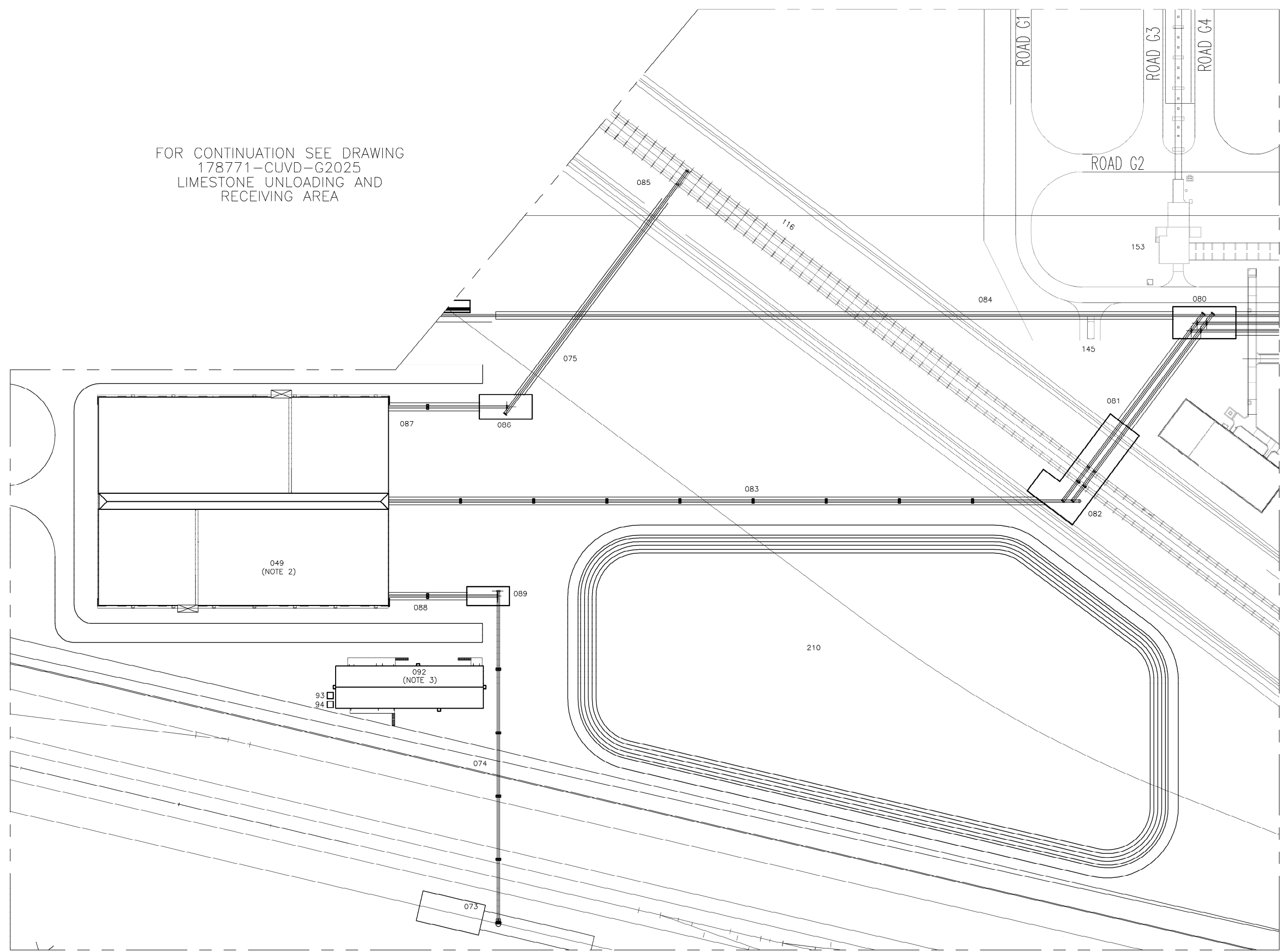
A
B
C
D
E
F
G
H
J
K
L
M
N
P
Q

DWG REF	KKS IDENTIFIER	DESCRIPTION	TIEDOWN ELEVATION
039		LIMESTONE STORAGE AREA	
049		GYPSPUM STORAGE BUILDING	
073		GYPSPUM LOADOUT HOPPER	
074		SALEABLE GYPSPUM CONVEYOR (GCVY-13)	
075		REJECT GYPSPUM CONVEYOR (GCVY-11)	
080		GYPSPUM TRANSFER HOUSE GTH-3	
081		GYPSPUM LINK CONVEYORS (GCVY-7 AND GCVY-8)	
082		GYPSPUM TRANSFER HOUSE GTH-4	
083		GYPSPUM STACKING CONVEYOR (GCVY-9)	
084		LIMESTONE RECLAIM CONVEYOR (LCVY-3)	
085		GYPSPUM TRANSFER HOUSE GTH-6	
086		GYPSPUM TRANSFER HOUSE GTH-5	
087		REJECT GYPSPUM RECLAIM CONVEYOR (GCVY-10)	
088		SALEABLE GYPSPUM RECLAIM CONVEYOR (GCVY-12)	
089		GYPSPUM TRANSFER HOUSE GTH-7	
092		LIMESTONE AND GYPSPUM HANDLING SUBSTATION	
093		AIR COOLED CHILLER	
094		AIR COOLED CHILLER	
116		EXISTING OVERLAND ASH CONVEYORS	
145		EXISTING CST TANKER FILLING	
153		EXISTING COAL CONVEYOR TRANSFER HOUSE #1	
210		STORM WATER DIRTY DAM	

LEGEND:

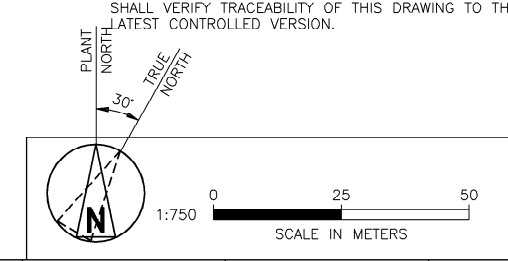
(1) CENTERLINE SHAFT	☐ CAGED LADDER
(2) CENTERLINE DISCHARGE	— IADDFR
(3) BOTTOM OF BASEPLATE	— SAFETY GATE
(4) WALL MOUNTED	▨ GRATING
(5) EDGE OF CABINET	▨ CONCRETE
(6) BOTTOM OF CABINET	▨ CHECKER PLATE
(7) CENTERLINE SHELL	— SLIDING EXTERIOR DOOR
(8) COLUMN/RACK MOUNTED	
(9) SKID MOUNTED	
(10) CENTERLINE OF UNIT	
(11) CENTERLINE OF SUCTION	
(12) BOTTOM OF SOLE PLATE	
(13) CENTERLINE OF TANK	
(14) EDGE OF SKID	
F FRONT	
BL BUILDING LINE	
(HC) FIRE PROTECTION HOSE CONNECTION	

- NOTES
- SEE DRAWING CGAU-G1000 FOR PLOT PLAN.
 - FOR GYPSPUM STORAGE BUILDING GENERAL ARRANGEMENT, SEE DRAWING 178771-CUG-0204.
 - FOR LIMESTONE AND GYPSPUM HANDLING SUBSTATION GENERAL ARRANGEMENT, SEE DRAWING 178771-CUBV-G2014.
 - FOR LIMESTONE UNLOADING AND RECEIVING AREA GENERAL ARRANGEMENT, SEE DRAWING 178771-CUVD-G2025.



FOR CONTINUATION SEE DRAWING
178771-CUVD-G2025
LIMESTONE UNLOADING AND
RECEIVING AREA

NOT TO BE USED FOR CONSTRUCTION
THE DISTRIBUTION AND USE OF THE NATIVE FORMAT CAD FILE OF THIS DRAWING IS UNCONTROLLED. THE USER SHALL VERIFY TRACEABILITY OF THIS DRAWING TO THE LATEST CONTROLLED VERSION.



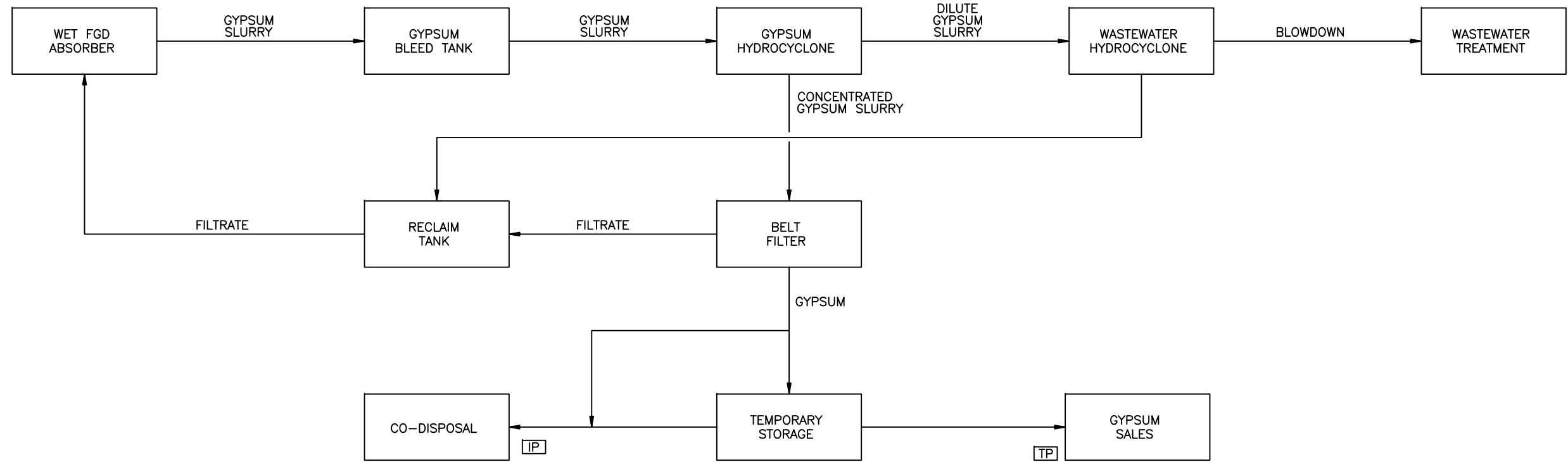
NO.	DATE	BY	CHKD BY	DESCRIPTION
2	20/02/24	THF	SMA	TEAM COMMENTS INCORP
1	16/02/24	THF	SMA	TEAM COMMENTS INCORP
0	20/02/23	THF	SMA	ISSUED FOR TEAM RVW

DESIGN	THF	SCALE	1:750
DRAWN	THF	DATE	15/02/24
CHECKED	THF	DATE	15/02/24
APPROVED	THF	DATE	15/02/24

178771-CUG-G2023		REV	2
0.84/37881		DATE	15/02/24
DZE		DRAWN	THF

FAB54/28 ACUC 18.2z (JMS Tech)
 15/02/24 15:28:05

1 2 3 4 5 6 7 8 9 10 11 12 13 14 15 16 17 18 19 20 21 22

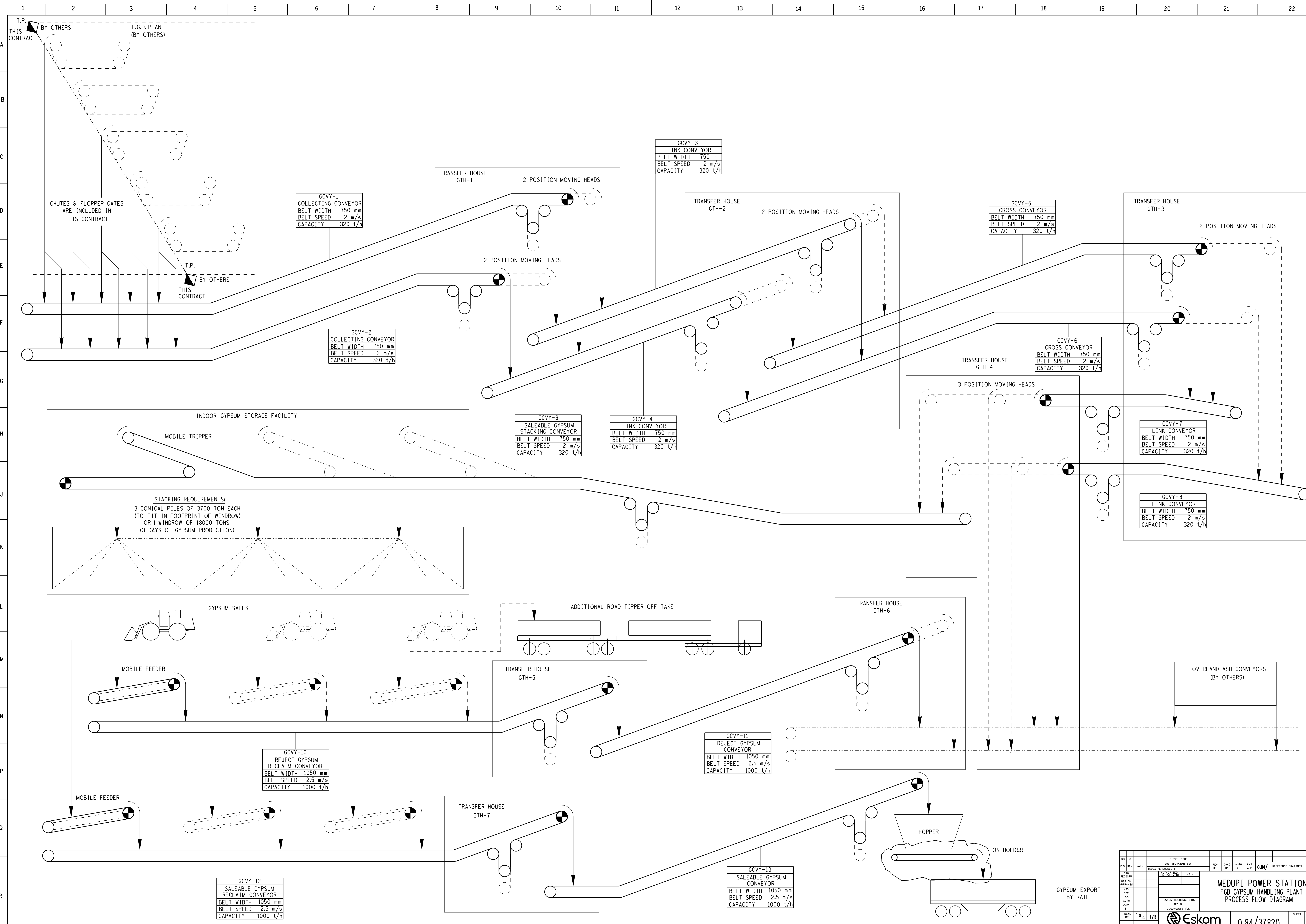


IP - INTERFACE POINT WITH EXISTING PLANT
 TP - TERMINAL POINT EXTERNAL TO FGD RETROFIT PROJECT

NOT TO BE USED FOR CONSTRUCTION
 THE DISTRIBUTION AND USE OF THE NATIVE FORMAT CAD FILE OF THIS DRAWING IS UNCONTROLLED. THE USER SHALL VERIFY TRACEABILITY OF THIS DRAWING TO THE LATEST CONTROLLED VERSION.

0 08/27/14		ISSUED FOR EIA		SCE	SMA		
REV	DATE	ISSUED FOR EIA	DATE	REV	DATE	ISSUED FOR EIA	DATE
DESIGN		DESIGN		DESIGN		DESIGN	
APP		APP		APP		APP	
SCALE		SCALE		SCALE		SCALE	
Eskom				178771-SK-M0010			
DSZ				0			

18.2a (LMS Tech)
 09/05/14 08:39:48



GCVY-1
COLLECTING CONVEYOR
BELT WIDTH 750 mm
BELT SPEED 2 m/s
CAPACITY 320 t/h

GCVY-2
COLLECTING CONVEYOR
BELT WIDTH 750 mm
BELT SPEED 2 m/s
CAPACITY 320 t/h

GCVY-3
LINK CONVEYOR
BELT WIDTH 750 mm
BELT SPEED 2 m/s
CAPACITY 320 t/h

GCVY-5
CROSS CONVEYOR
BELT WIDTH 750 mm
BELT SPEED 2 m/s
CAPACITY 320 t/h

GCVY-6
CROSS CONVEYOR
BELT WIDTH 750 mm
BELT SPEED 2 m/s
CAPACITY 320 t/h

GCVY-9
SALEABLE GYPSUM
STACKING CONVEYOR
BELT WIDTH 750 mm
BELT SPEED 2 m/s
CAPACITY 320 t/h

GCVY-4
LINK CONVEYOR
BELT WIDTH 750 mm
BELT SPEED 2 m/s
CAPACITY 320 t/h

GCVY-7
LINK CONVEYOR
BELT WIDTH 750 mm
BELT SPEED 2 m/s
CAPACITY 320 t/h

GCVY-8
LINK CONVEYOR
BELT WIDTH 750 mm
BELT SPEED 2 m/s
CAPACITY 320 t/h

GCVY-10
REJECT GYPSUM
RECLAIM CONVEYOR
BELT WIDTH 1050 mm
BELT SPEED 2.5 m/s
CAPACITY 1000 t/h

GCVY-11
REJECT GYPSUM
CONVEYOR
BELT WIDTH 1050 mm
BELT SPEED 2.5 m/s
CAPACITY 1000 t/h

GCVY-12
SALEABLE GYPSUM
RECLAIM CONVEYOR
BELT WIDTH 1050 mm
BELT SPEED 2.5 m/s
CAPACITY 1000 t/h

GCVY-13
SALEABLE GYPSUM
CONVEYOR
BELT WIDTH 1050 mm
BELT SPEED 2.5 m/s
CAPACITY 1000 t/h

DO	D	FIRST ISSUE	REV	BY	CHKD	BY	AUTH	BY	APP	0.84	REFERENCE DRAWINGS
DATE	INDEX	REVISION	**								
DESIGN	DATE	DATE									
APP											
CHKD											
BY											
SCALE	DIAGRAM										

ESKOM Enterprises

MEDUPI POWER STATION
FGD GYPSUM HANDLING PLANT
PROCESS FLOW DIAGRAM

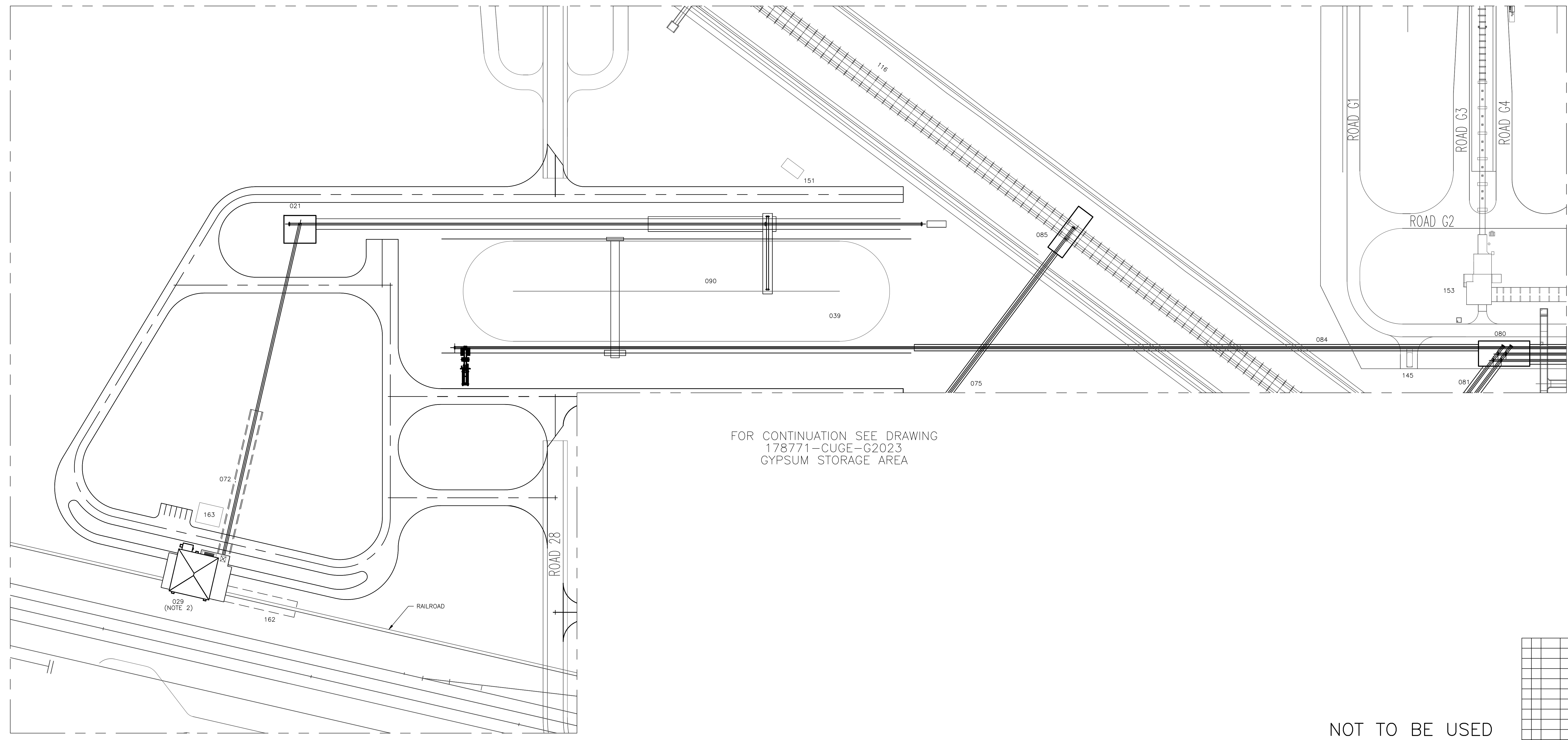
0.84/37820

SHEET 00

EQUIPMENT IDENTIFICATION AND LOCATION LIST			
DWG REF	KKS IDENTIFIER	DESCRIPTION	TIEDOWN ELEVATION
021		LIMESTONE TRANSFER HOUSE LTH-1	-
029		LIMESTONE UNLOADING FACILITY	-
039		LIMESTONE STORAGE AREA	-
072		LIMESTONE UNDERGROUND LINK CONVEYOR 1	-
075		REJECT GYPSUM CONVEYOR 11	-
080		GYPSUM TRANSFER HOUSE GTH-3	-
081		GYPSUM LINK CONVEYORS 7 AND 8	-
083		SALEABLE GYPSUM STACKING CONVEYOR 9	-
084		LIMESTONE RECLAIM CONVEYOR 3	-
085		GYPSUM TRANSFER HOUSE GTH-6	-
090		LIMESTONE STACKING CONVEYOR 2	-
116		EXISTING OVERLAND ASH CONVEYORS	-
145		EXISTING CSY TANKER FILLING	-
151		EXISTING SUBSTATION	-
153		EXISTING COAL CONVEYOR TRANSFER HOUSE #4	-
162		EXISTING WAGON POSITIONER	-
163		EXISTING YARD CONTROLLER'S OFFICE	-

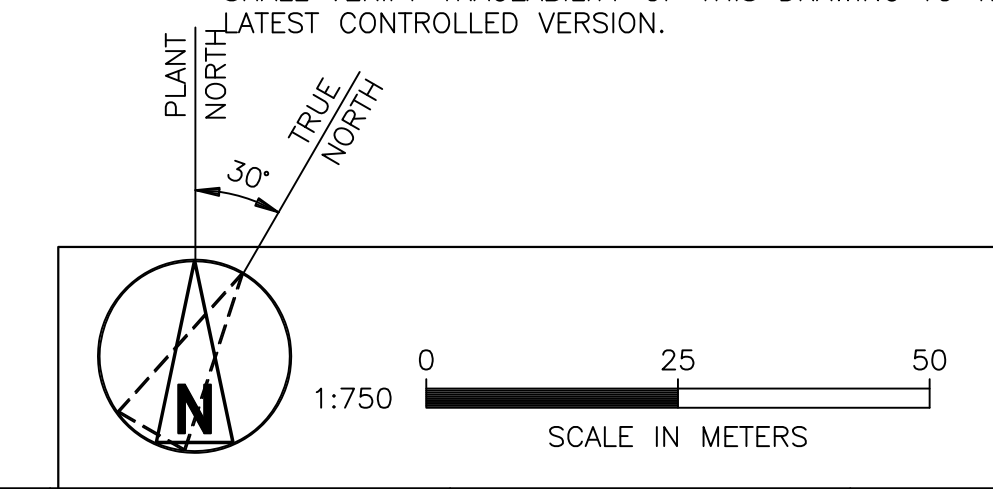
LEGEND:	
(1) CENTERLINE SHAFT	☐ CAGED LADDER
(2) CENTERLINE DISCHARGE	— LADDER
(3) BOTTOM OF BASEPLATE	— SAFETY GATE
(4) WALL MOUNTED	▨ GRATING
(5) EDGE OF CABINET	▩ CONCRETE
(6) BOTTOM OF CABINET	▨ CHECKER PLATE
(7) CENTERLINE SHELL	— SLIDING EXTERIOR DOOR
(8) COLUMN/RACK MOUNTED	
(9) SKID MOUNTED	
(10) CENTERLINE OF UNIT	
(11) CENTERLINE OF SUCTION	
(12) BOTTOM OF SOLE PLATE	
(13) CENTERLINE OF TANK	
(14) EDGE OF SKID	
F FRONT	
BL BUILDING LINE	
HC FIRE PROTECTION HOSE CONNECTION	

- NOTES
- SEE DRAWING CGAU-G1000 FOR PLOT PLAN.
 - FOR LIMESTONE UNLOADING AND RECEIVING BUILDING GENERAL ARRANGEMENT, SEE DRAWING 178771-CUV-G2026.
 - FOR GYPSUM STORAGE AREA GENERAL ARRANGEMENT, SEE DRAWING 178771-CUG-G2023.



FOR CONTINUATION SEE DRAWING
178771-CUG-G2023
GYPSUM STORAGE AREA

NOT TO BE USED FOR CONSTRUCTION
THE DISTRIBUTION AND USE OF THE NATIVE FORMAT CAD FILE OF THIS DRAWING IS UNCONTROLLED. THE USER SHALL VERIFY TRACEABILITY OF THIS DRAWING TO THE LATEST CONTROLLED VERSION.



NO.	REV.	DATE	DESCRIPTION	BY	CHKD BY	APP.	SCALE
1	ISSUED		TEAM COMMENTS INCORP	THF	SMA		
0	ISSUED		ISSUED FOR TEAM REV	THF	SMA		

NO.	REV.	DATE	DESCRIPTION	BY	CHKD BY	APP.	SCALE
1	ISSUED		TEAM COMMENTS INCORP	THF	SMA		
0	ISSUED		ISSUED FOR TEAM REV	THF	SMA		

		MEDUPI POWER STATION GENERAL ARRANGEMENT LIMESTONE UNLOADING AND RECEIVING AREA	
		178771-CUV-G2025	
		0.84/37961	
SCALE	1:750	DWG CODE	DZE
DRAWN BY	THF	SHEET	1
SCALE		REV	